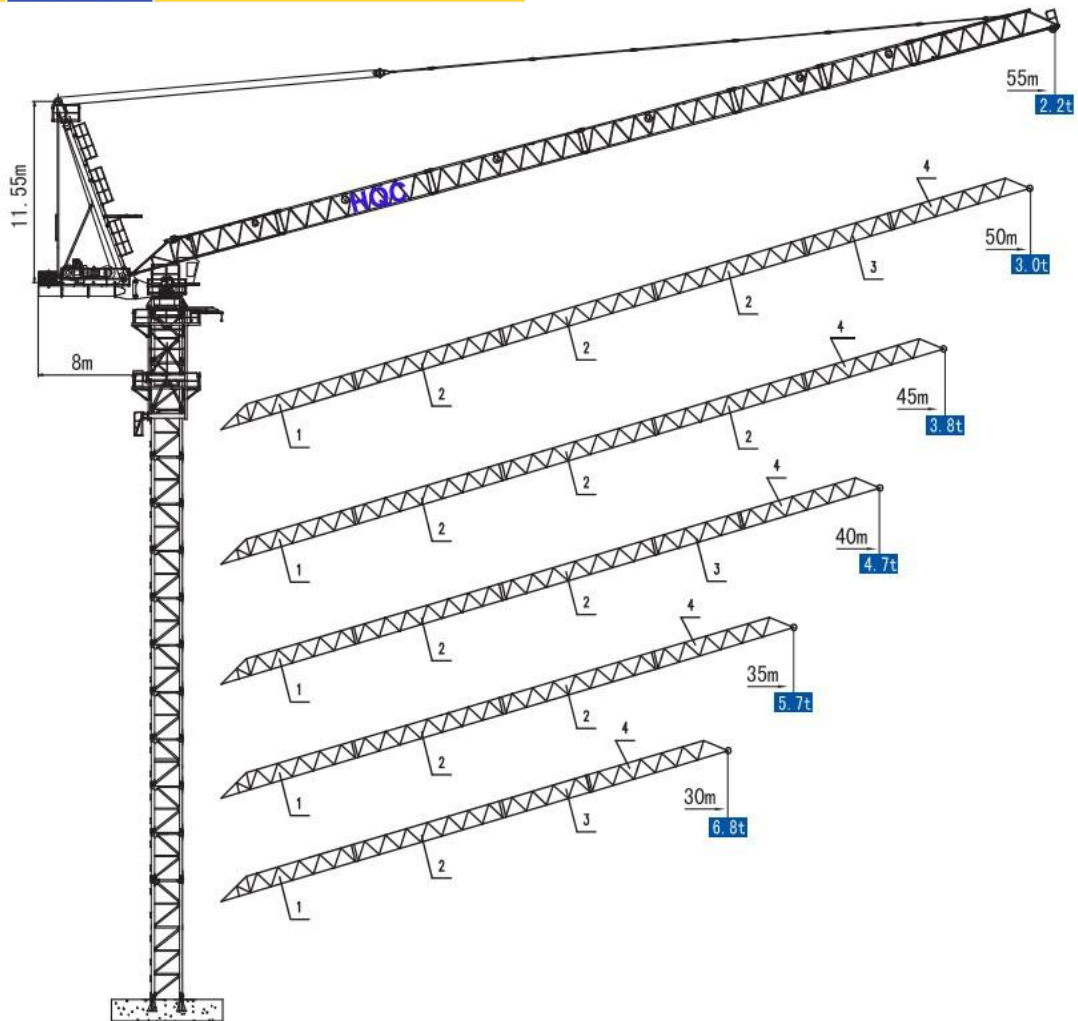


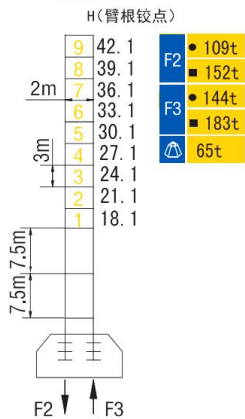
LUFFING TYPE TOWER CRANE XGTL180

外形尺寸 Dimensions

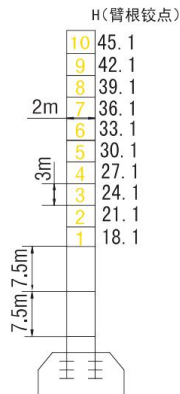


技术状态 Status

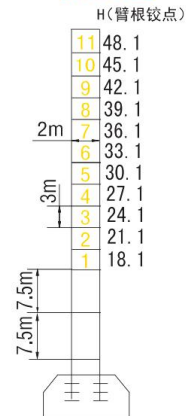
Jib length 臂长55-50m












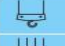

Jib length 臂长45-40m




Jib length 臂长35-30m



● 工作状态 In service ■ 非工作状态 Out of service
 ▲ 不含平衡重最大臂长最大工作高度时的自重 Without load and ballast with longest jib and maximum height

起重臂长 Jib length		幅度 (m) Range	4.23	15	20	25	30	35	40	45	50	55	
61.3m		起重量 (Kg) Load	6000						5400	4300	3430	3000	2200
55.4m		起重量 (Kg) Load	6000						5400	4300	3430	3000	
			12000		10960	8190	6320	4960	3920	3150	2700		
49.5m		起重量 (Kg) Load	6000						5350	4300	3800		
			12000		11000	8280	6430	5090	4070	3500			
45.4m		起重量 (Kg) Load	6000						5400	4700			
			12000		11020	8310	6470	5130	4460				
39.5m		起重量 (Kg) Load	6000						5700				
			12000		11060	8410	6590	5650					
35.4m		起重量 (Kg) Load	6000										
			12000			8240	6800						

传动机构 Mechanisms

机构 Mechanisms	图例 Example	机构代号 Model	速度 (m/min) Speed	起重量 (t) Hoist Weight	容绳量 (m) Rope Capacity	功率 Power
起升 Hoisting		55LVF30	 0~41.5	6	600	55kW
			 0~62	4.5		
			 0~126	2		
			 0~21	12		
			 0~31	9		
			 0~63	4		
变幅 Trolleying		37DVF40BX	15° ~84° ≤ 3 min			37kW
回转 Slewing		RCV120	0~0.7r/min			2×120N.m
电源 Main supply					380V/50Hz ; 440V/60Hz	
总功率 (不含顶升和行走) Gross power (excuding top-lifting and travelling)						103kW