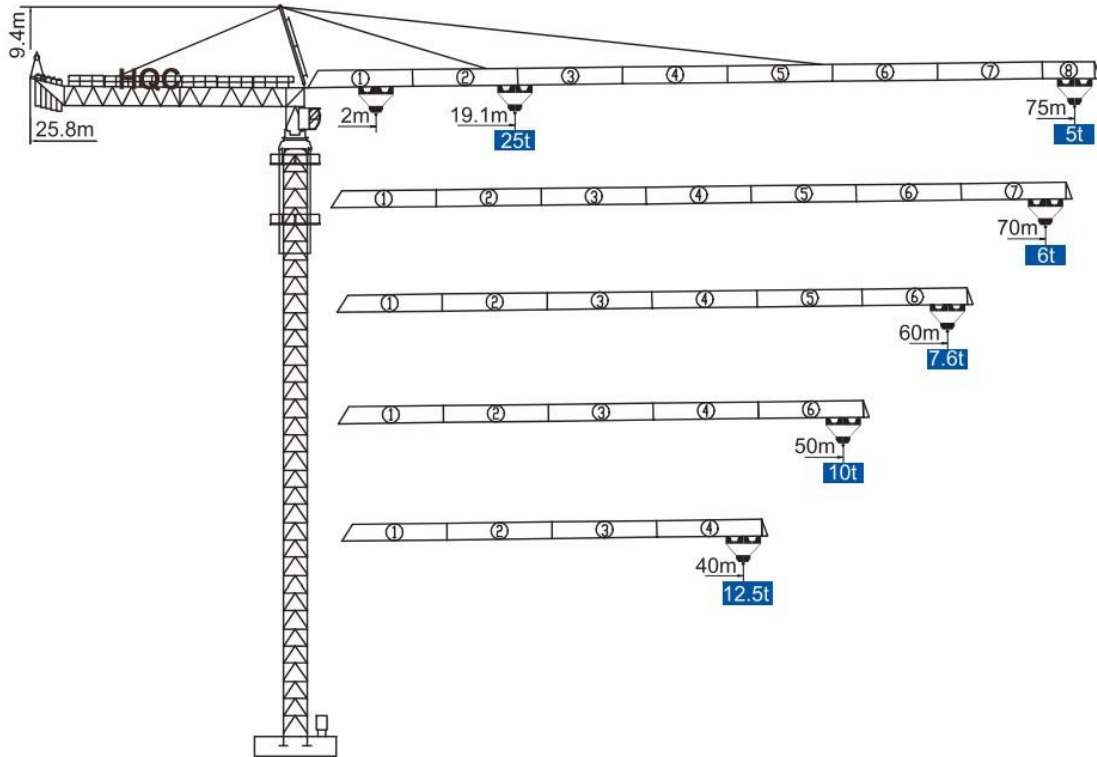


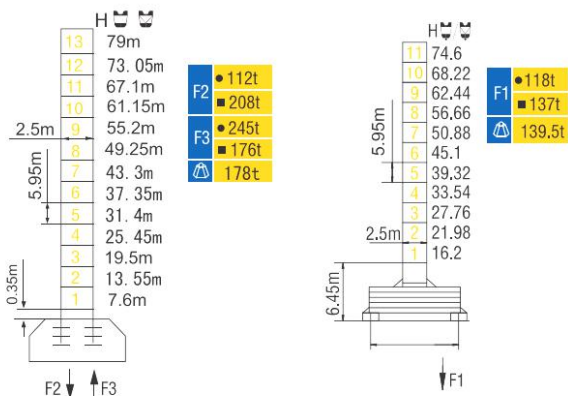
HAMMER HEAD TYPE TOPKIT TOWER CRANE TC7550-XGT500



外形尺寸 Dimensions



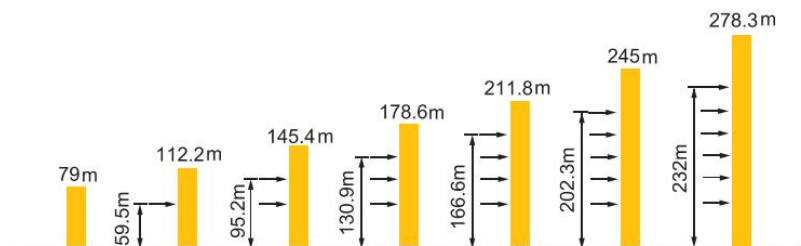
技术状态 Status



- 工作状态 In service
- 非工作状态 Out of service












⚠ 不含平衡重最大臂长最大工作高度时的自重
Without load and ballast with longest jib and maximum height

附着 Anchorages





* 如需达到更高的高度, 请与我们联系! For greater heights, consult us!

起重特性 Load Diagrams

| 起重臂 (m) Jib |  | R _{min} | R (C _{max}) | C _{max} | | | | | | | | | | | |
|----------------|--|------------------|-----------------------|------------------|-------|-------|-------|-------|-------|------|------|------|------|------|------|
| | | | | | 25 | 30 | 35 | 40 | 45 | 50 | 55 | 60 | 65 | 70 | 75 |
| 75m |  | 2 | 36.4 | 12.5 | 12500 | | | 11155 | 9673 | 8495 | 7536 | 6740 | 6069 | 5496 | 5000 |
| |  | 2 | 19.1 | 25 | 17975 | 14301 | 11715 | 9795 | 8313 | 7135 | 6176 | 5380 | 4709 | 4136 | 3640 |
| 70m |  | 2 | 38.8 | 12.5 | 12500 | | | 12049 | 10465 | 9206 | 8181 | 7330 | 6613 | 6000 | |
| |  | 2 | 20.3 | 25 | 19433 | 15506 | 12741 | 10689 | 9105 | 7846 | 6821 | 5970 | 5253 | 4640 | |
| 60m |  | 2 | 39.9 | 12.5 | 12500 | | | 12457 | 10827 | 9531 | 8476 | 7600 | | | |
| |  | 2 | 20.9 | 25 | 20099 | 16056 | 13210 | 11097 | 9467 | 8171 | 7116 | 6240 | | | |
| 50m |  | 2 | 41.5 | 12.5 | 12500 | | | 11350 | 10000 | | | | | | |
| |  | 2 | 21.7 | 25 | 21061 | 16851 | 13887 | 11687 | 9990 | 8640 | | | | | |
| 40m |  | 2 | 40 | 12.5 | 12500 | | | | | | | | | | |
| |  | 2 | 21.7 | 25 | 21081 | 16868 | 13902 | 11700 | | | | | | | |

传动机构 Mechanisms

| 机构 Mechanisms | 图例 Example | 机构代号 Model | 速度 (m/min) Speed | 起重量 (t) Hoist Weight | 容绳量 (m) Rope Capacity | 功率 Power | |
|--|---|---------------|---|-------------------------|--------------------------|--------------|-------|
| 起升 Hoisting |  | 110LVF63 |  | 5.4~45 | 12.5 | 660 >660* | 110kW |
| | | | | 60 | 9.5 | | |
| | | | | 90 | 3.8 | | |
| | | |  | 2.7~22.5 | 25 | | |
| | | | | 30 | 19 | | |
| | | | | 45 | 7.5 | | |
| 变幅 Trolleying |  | 15DVF16 | 0~62m/min | | | 15kW | |
| 回转 Slewing |  | RCV435 | 0~0.6r/min | | | 3×9kW | |
| 电源 Main supply | | | | | 380V/440V, 50Hz/60Hz | | |
| 总功率 (不含顶升和行走) Gross power (excluding top-lifting and travelling) | | | | | | 150kW | |

配重配置 Ballast

| Counter-jib ballast | |  6000 (kg) / 5000 (kg) | | |
|---|---|---|--------|--------|
|  |  |  (kg) | PZ6000 | PZ5000 |
| 75m | 25.8m | 40000 | 5 | 2 |
| 70m | 25.8m | 35000 | 5 | 1 |
| 60m | 25.8m | 30000 | 5 | 0 |
| 50m | 25.8m | 24000 | 4 | 0 |
| 40m | 25.8m | 18000 | 3 | 0 |