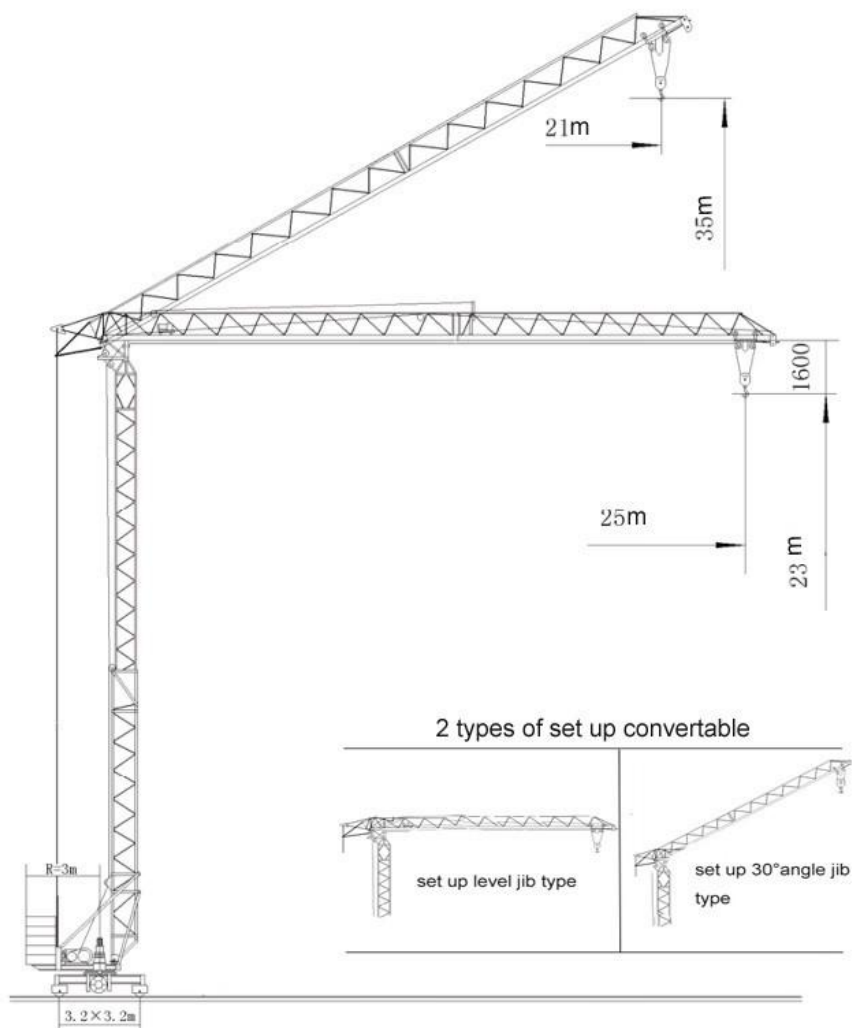


SELF-ERECTING TYPE SPECIAL TOWER CRANE QTK 25

外形尺寸 Dimensions



起重特性 Load Diagrams

起重臂 (m) jib	R _{min}	R (C _{max})	C _{max}	幅度 (m) Range									
				3	9.9	10	12	14	16	18	20	22	25
25m		3 m	17.5m	1500	1500					1488	1311	1177	1000
		3 m	9.9m	3000	3000	2900	2407	2005	1712	1488	1311	1169	1000
21m		3 m	21m	1000	1000								
		3 m	21m	1000	1000								

主要参数

MAIN TECHNICAL DATA

QTK25 is a special type of tower crane which is easy and fast to install, it can be erected by 3-4

persons with a 5 tons crane or boom truck within one day. It can also be quickly folded and transferred to another location & set up again within 1-2 days by skilled installers

Lifting moment	kN·m	250
Rated lift weight	kN	10~30
Work range (Leveled Jib / Jib at angle 30°)	m	3~25/(21)
Lift height(Leveled Jib / Jib at Angle 30°)	m	23/35
Track moment x axle moment	m	3.2×3.2
Work wind scale	Level	6
Self weight	t	10.5
Ballast weight	t	14.4
Radius of tail gyration	m	3
Cable drum driving distance	m	Around 20
Rail type	kg/m	(38#)43
Equipment total power (380V/50Hz/3 or 440V/60HZ/3P)	kW	24.6



传动机构 Mechanisms

Mechanism name	Unit	Work speed		Power (KW)
Hoisting mechanism	(m/min)	Two lines	Four lines	15
		0~32/	0~16	
Jib Luffing mechanism	(m/min)	0~25		3
Crane traveling mechanism	(m/min)	0~20		2×2.2
swing mechanism	(r/min)	0.2/0.4/0.6		2.2