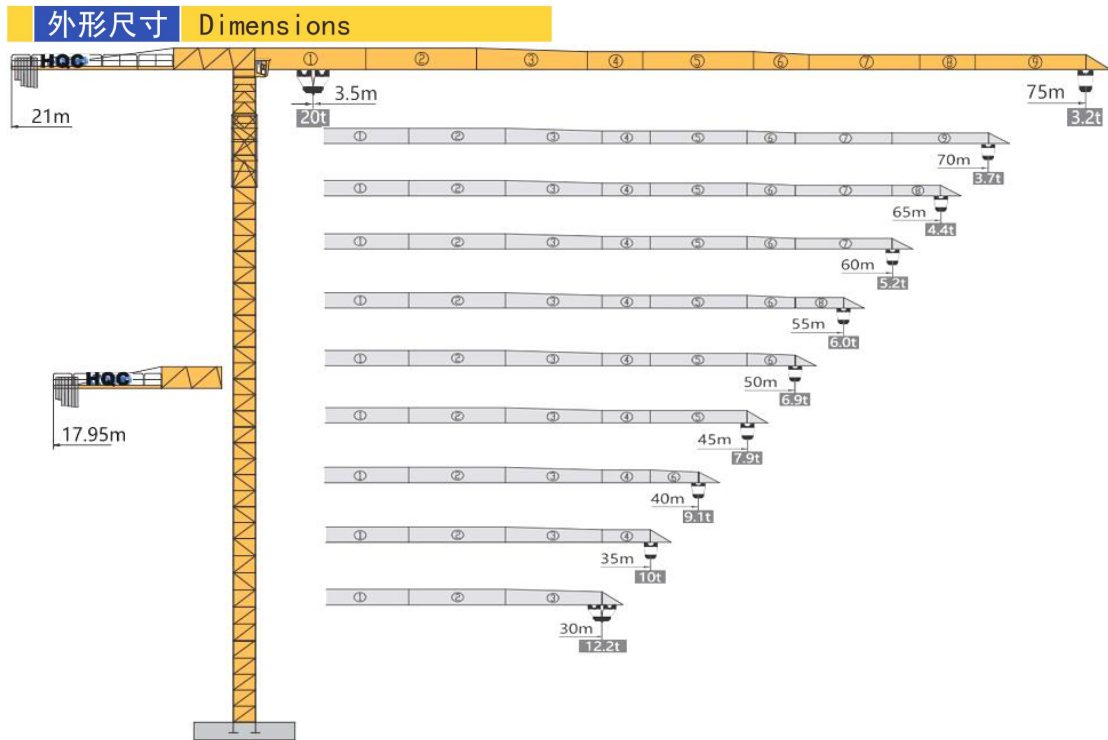
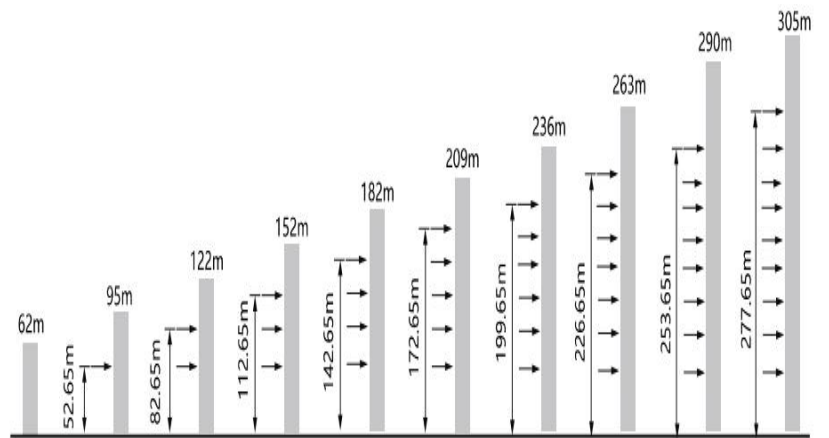
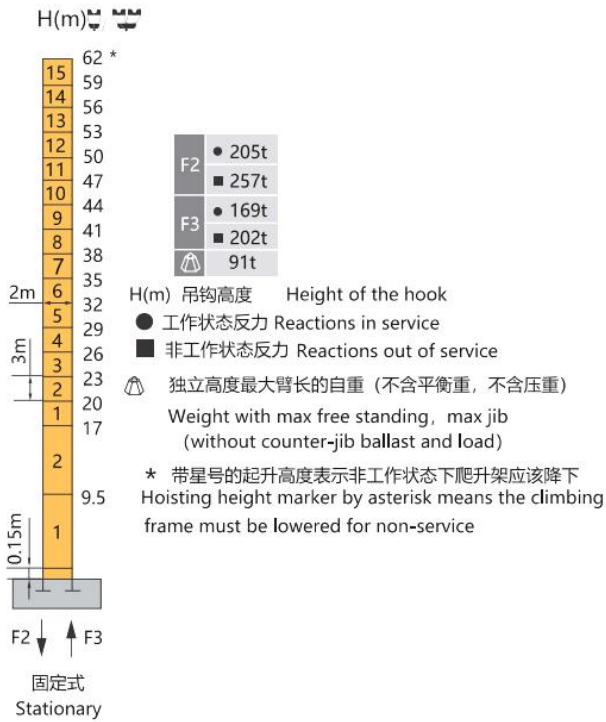


# HAMMER HEAD TYPE TOPLESS TOWER CRANE XGT7532-20S



**技术状态 Status**

**附着 Anchorages**



## 起重特性 Load Diagrams

起重臂 jib R(m)	$\alpha$	R <sub>min</sub> m	R(C <sub>max</sub> ) m	C <sub>max</sub> kg	幅度 (m) / 起重量 (kg)											Range(m) / Loading (kg)	
					15	20	25	30	35	40	45	50	55	60	65	70	75
75		3.5	28.24	10000	10000		9361	7894	6794	5938	5253	4396	4226	3831	3493	3200	
		3.5	14.17	20000	18797	13663	10582	8528	7061	5961	5105	4421	3861	3394	2999	2660	2367
70		3.5	29.56	10000	10000		9843	8307	7155	6259	5543	4956	4467	4054	3700		
		3.5	14.83	20000	19761	14386	11161	9010	7475	6323	5427	4710	4124	3635	3221	2867	
65		3.5	31.62	10000	10000		8949	7717	6758	5992	5365	4842	4400				
		3.5	15.86	20000	20000	15509	12059	9759	8116	6884	5926	5159	4532	4009	3567		
60		3.5	33.59	10000	10000		9562	8253	7235	6421	5755	5200					
		3.5	16.85	20000	20000	16582	12918	10475	8729	7421	6403	5588	4922	4367			
55		3.5	34.83	10000	10000		9947	8590	7535	6690	6000						
		3.5	17.47	20000	20000	17255	13456	10923	9114	7757	6702	5858	5167				
50		3.5	35.78	10000	10000		8851	7767	6900								
		3.5	17.95	20000	20000	17778	13875	11272	9413	8019	6934	6067					
45		3.5	36.33	10000	10000		9000	7900									
		3.5	18.23	20000	20000	18076	14113	11471	9583	8168	7067						
40		3.5	36.69	10000	10000		9100										
		3.5	18.41	20000	20000	18275	14271	11603	9697	8267							
35		3.5	35.00	10000	10000												
		3.5	17.56	20000	20000	17348	13530	10985	9167								
30		3.5	30.00	10000	10000												
		3.5	19.23	20000	20000	19170	14988	12200									

## 传动机构 Mechanisms

传动机构 Mechanisms	图例 Legend	型号 Model	速度 (m/min) Speed	起重量 (t) Hoist Weight	容绳量 (m) Rope Capacity	功率 (kW) Power
起升 Hoisting		90JLF50Z	0-45	10	610	90
			0-65	5		
			0-90	2.5		
变幅 Trolleying		11JXF10	0-22.5	20	>610*	11
			0-32.5	10		
			0-45	5		
回转 Slewing		JH12CT6		0-0.7r/min		2x9
行走 Travelling		RT443		0-25m/min		4x4
电源 Main Supply			380V,50HZ,3P / 440V,60HZ,3P			
总功率 (不含顶升和行走) Gross Power (Excluding climbing and travelling)						119kW

## 配重配置 Ballast

配重配置 Counter-jib Ballast		3320-1600		
(m)	(m)	(kg)	PZ3320	PZ1600
75	21	19800	5	2
70	21	18200	5	1
65	21	18200	5	1
60	21	16600	5	0
55	21	14880	4	1
50	21	13280	4	0
45	17.95	18200	5	1
40	17.95	14880	4	1
35	17.95	11560	3	1
30	17.95	11560	3	1