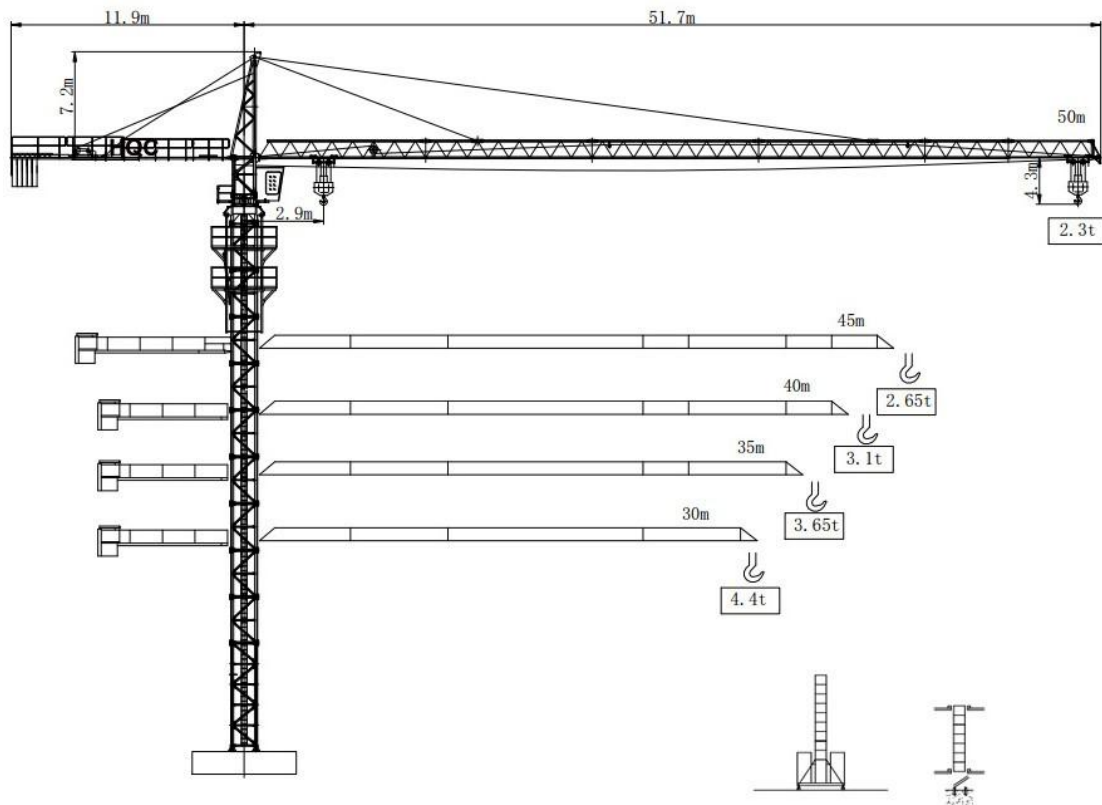


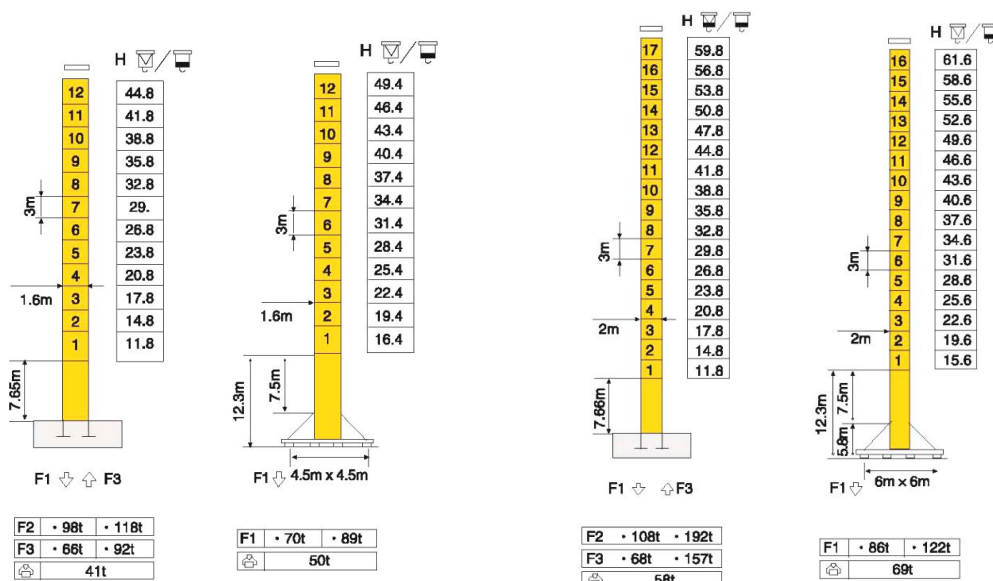
# HAMMER HEAD TYPE TOPKIT TOWER CRANE TC5023(F023B)



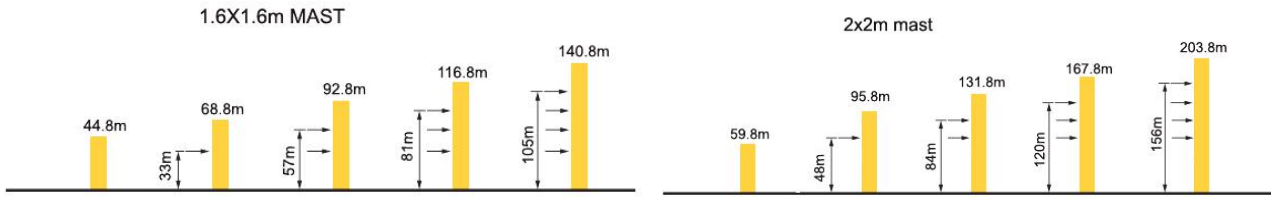
## 外形尺寸 Dimensions



## 技术状态 Status



## 附着 Anchorages



## 起重特性 Load Diagrams

起重臂 (m) jib	R <sub>min</sub>	R (C <sub>max</sub> )	C <sub>max</sub>	幅度 (m) Range										
				5	10	15	20	25	30	35	40	45	50	
50m		2.9m	26.9m	5000	5000					4400	3650	3100	2650	2300
		2.9m	14.5m	10000	10000	9800	6900	4900	4200	3400	2900	2450	2100	
45m		2.9m	26.9m	5000	5000					4500	3700	2950	2650	
		2.9m	14.5m	10000	10000	9800	6900	4900	4300	3500	2750	2450		
40m		2.9m	26.9m	5000	5000					4400	3720	3100		
		2.9m	14.5m	10000	10000		7050	4950	4200	3520	2900			

## 传动机构 Mechanisms

机构 Mechanisms	图例 Example	机构代号 Model	速度 (m/min) Speed	起重量 (t) Hoist Weight	容绳量 (m) Rope Capacity	功率 Power	
起升 Hoisting		55RCS25		40	5	500M	41KW
				80	2.5		
				20	10	>500m†	
				40	5		
变幅 Trolleying		95JXL	15/38/58m /min			95n.m	
回转 Slewing		RCV95	0~ 0.7r/min			2 × 95n.m	
行走 Travelling		RT324	12/24m/min			2 × 2.6/5.2 kW	
电源 Main supply				380V/440V (±10%) 50/60HZ			
总功率 (不含顶升和行走) Gross power (excluding top-lifting and travelling)					65KW		

## 配重配置 Ballast

Counter-jib ballast		3100 (kg) / 3700 (kg)		
		(kg)	C3100	G3700
50m	11.5m	16100	4	1
45m	11.5m	14800	0	4
40m	11.5m	13600	2	2