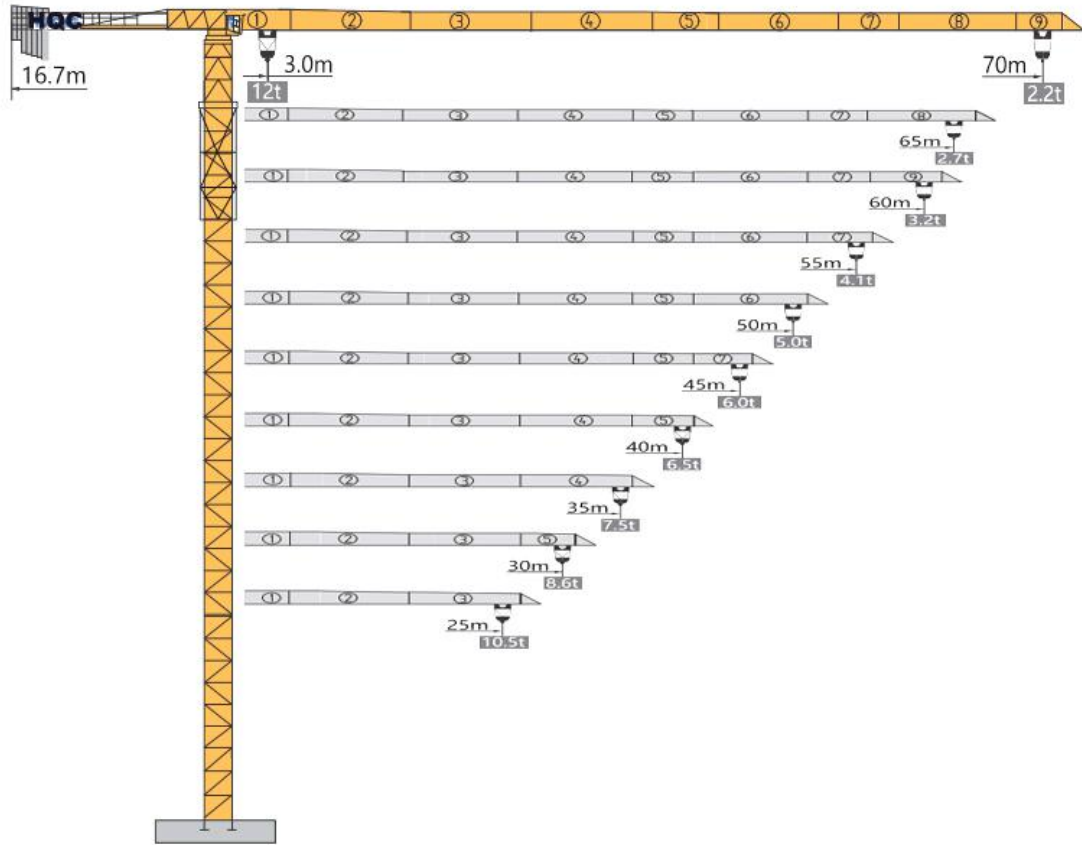


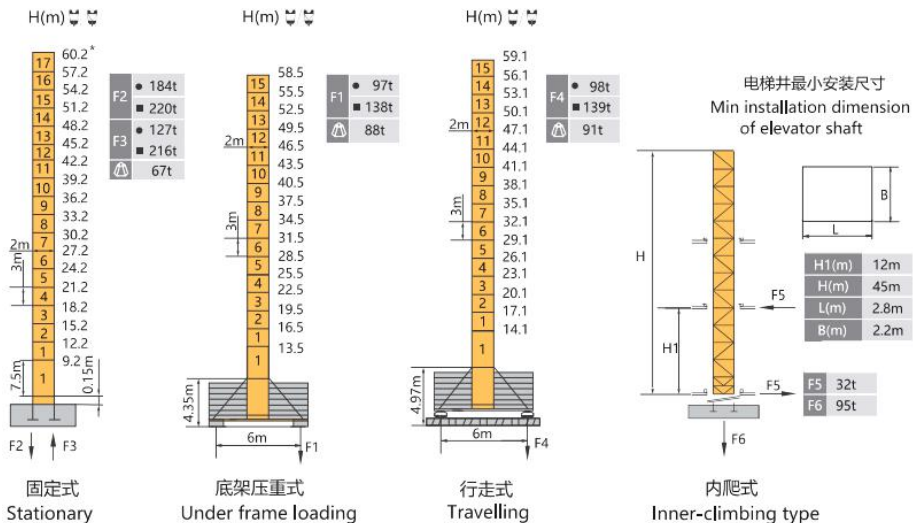
HAMMER HEAD TYPE TOPLESS TOWER CRANE XGT7022-10S



外形尺寸 Dimensions

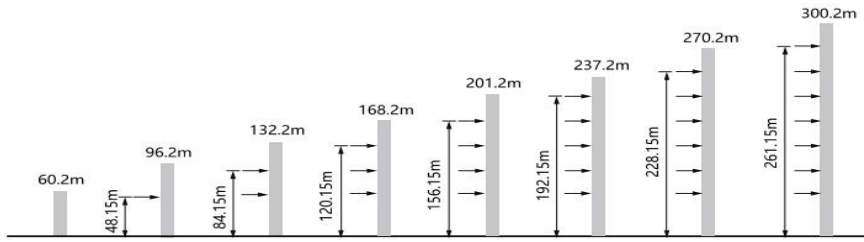


技术状态 Status



H(m) 吊钩高度 Height of the hook ● 工作状态反力 Reactions in service ■ 非工作状态反力 Reactions out of service
 独立高度最大臂长的自重 (不含平衡重, 不含压重) Weight with max free standing, max jib (without counter-jib ballast and load)
 * 带星号的起升高度表示非工作状态下爬升架应该降下 Hoisting height marker by asterisk means the climbing frame must be lowered for non-service

附着 Anchorages



起重特性 Load Diagrams

R(m)	α	R _{min} m	R(C _{max}) m	C _{max} kg	幅度 (m) / 起重重量 (kg)									
					20	25	30	35	40	45	50	55	60	65
70	↕	3.0	30.9	6000	6000									
		3.0	16.2	12000	9541	7435	6031	5028	4276	3691	3223	2840	2521	2251
65	↕	3.0	33.4	6000	6000									
		3.0	17.5	12000	10414	8133	6613	5527	4712	4079	3572	3157	2812	2519
60	↕	3.0	35.3	6000	6000									
		3.0	18.5	12000	11037	8631	7028	5883	5024	4355	3821	3384	3019	
55	↕	3.0	39.6	6000	6000									
		3.0	20.7	12000	12000	9809	8010	6724	5760	5010	4410	3919		
50	↕	3.0	42.6	6000	6000									
		3.0	22.3	12000	12000	10628	8692	7309	6271	5465	4819			
45	↕	3.0	45.0	6000	6000									
		3.0	23.7	12000	12000	11324	9281	7824	6728	5877				
40	↕	3.0	40.0	6000	6000									
		3.0	23.1	12000	12000	10994	8997	7570	6500					
35	↕	3.0	35.0	6000	6000									
		3.0	23.1	12000	12000	10896	8915	7500						
30	↕	3.0	30.0	6000	6000									
		3.0	22.8	12000	12000	10518	8600							
25	↕	3.0	25.0	6000	6000									
		3.0	22.0	12000	12000	10500								

传动机构 Mechanisms

传动机构 Mechanisms	图例 Legend	型号 Model	速度 (m/min) Speed	起重重量 (t) Hoist Weight	容绳量(m) Rope Capacity	功率(kW) Power
起升 Hoisting	↕	45LVF30A	0-45	6.0	640 >640*	45
			0-64	3.6		
			0-90	2.1		
变幅 Trolleying	↔	6JXF5	0-22.5	12	640 >640*	5.5
			0-32	7.2		
			0-45	4.2		
回转 Slewing	↻	JH12CT6		0-0.7r/min		2×7.5
行走 Travelling	↔	RT		0-25m/min		4×4
电源 Main Supply					380V,50HZ,3P / 440V,60HZ,3P	
总功率 (不含顶升和行走) Gross Power (Excluding climbing and travelling)						65.5kW

配重配置 Ballast

配重配置 Counter-jib Ballast		3250-1800		
三角架 (m)	桁架 (m)	重量 (kg)	PZ3250	PZ1800
70	16.7	19850	5	2
65	16.7	19850	5	2
60	16.7	18050	5	1
55	16.7	18050	5	1
50	16.7	18050	5	1
45	16.7	16250	5	0
40	16.7	14800	4	1
35	16.7	13350	3	2
30	16.7	10100	2	2
25	16.7	9750	3	0