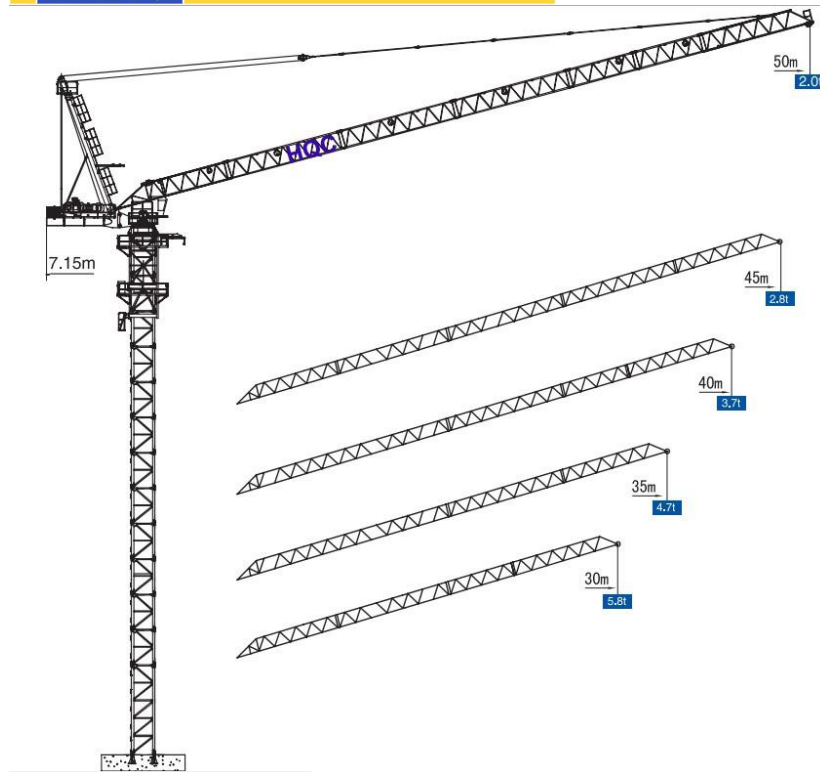


LUFFING TYPE TOWER CRANE XGTL160

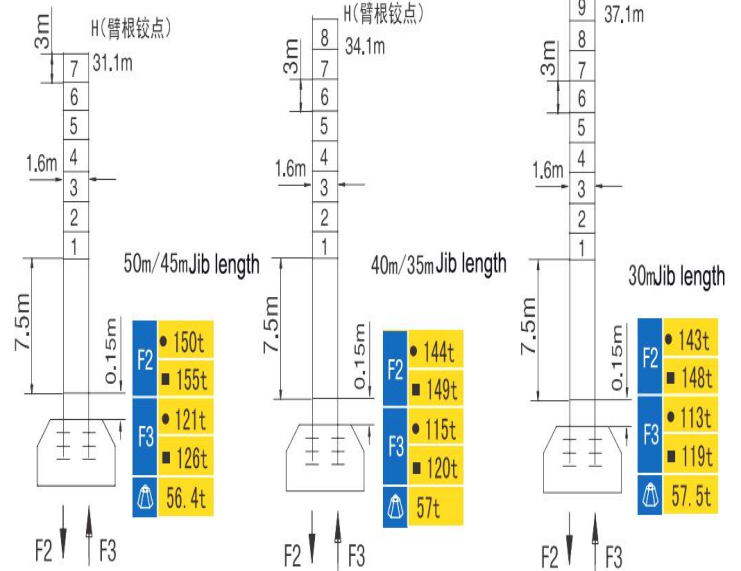
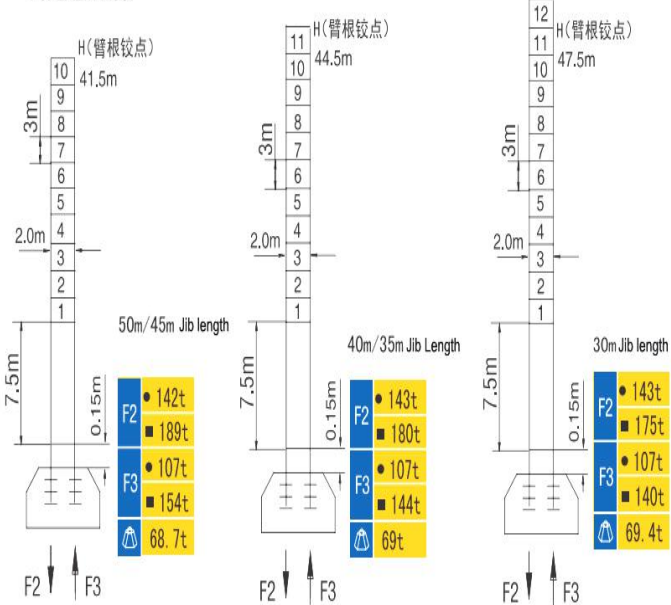
外形尺寸 Dimensions



技术状态 Status

For 1.6X1.6m Mast

For 2X2m Mast



● 工作状态 In service ■ 非工作状态 Out of service

⚖ 不含平衡重最大臂长最大工作高度时的自重

Without load and ballast with longest jib and maximum height

● 工作状态 In service ■ 非工作状态 Out of service

⚖ 不含平衡重最大臂长最大工作高度时的自重 Without load and ballast with longest jib and maximum height

起重特性 Load Diagrams

起重臂长 Jib length		R_{min}	$R(C_{max})$	C_{max}	15	20	25	30	35	40	45	50
50m		3.94	31.38	5000	5000				4183	3285	2577	2000
		3.94	18.73	10000	10000	9214	6846	5230	4057	3169	2474	1920
45m		3.42	32.54	5000	5000				4451	3534	2800	
		3.42	19.25	10000	10000	9580	7177	5534	4340	3433	2721	
40m		2.90	33.34	5000	5000				4635	3700		
		2.90	19.60	10000	10000	9780	7380	5735	4538	3622		
35m		2.38	33.63	5000	5000				4700			
		2.38	19.60	10000	10000	9809	7442	5817	4623			
30m		1.86	30.68	5000	5000							
		1.86	19.60	10000	10000	9771	7440	5800				

传动机构 Mechanisms

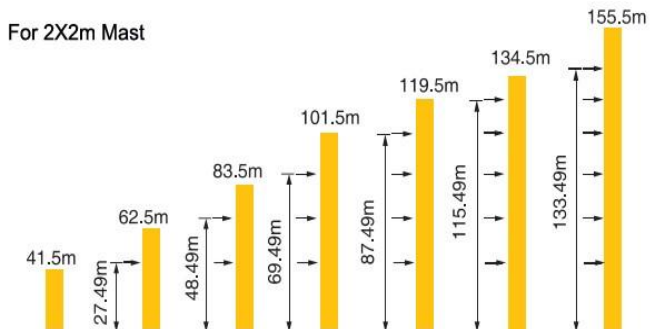
机构 Mechanisms	图例 Example	机构代号 Model	速度 (m/min) Speed	起重量 (t) Host Weight	容绳量 (m) Rope Capacity	功率 Power
起升 Hoisting		49LVP25	0-45	5	550	45 kW
			45-90	2.5		
			0-22.5	10	> 550 *	
			22.5-45	5		
变幅 Luffing		37DVF40		2.5m/min		37 kW
回转 Slewing		RCV240		0.6m/min		2 × 120Nm
行走 Travelling		FT324		1224m/min		2 × 2,652 kW
		10TVF		0-25		2 × 5.2 kW
电源 Main supply						380V/50Hz; 440V/60Hz
总功率 Gross power						83kW

配重配置 Ballast

Counter-jib ballast		2900 (kg)	7600 (kg)	
		PZ2900	PZ7600	(kg)
50m	7.15m	1	1	10500
45m	7.15m	1	1	10500
40m	7.15m	1	1	10500
35m	7.15m	1	1	10500
30m	7.15m	1	1	10500

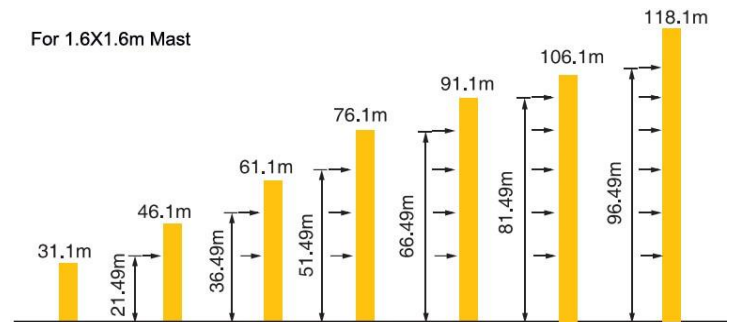
附着 Anchorages

For 2X2m Mast



* 如需达到更高的高度, 请与我们联系! For greater heights, consult us!

For 1.6X1.6m Mast



* 如需达到更高的高度, 请与我们联系! For greater heights, consult us!