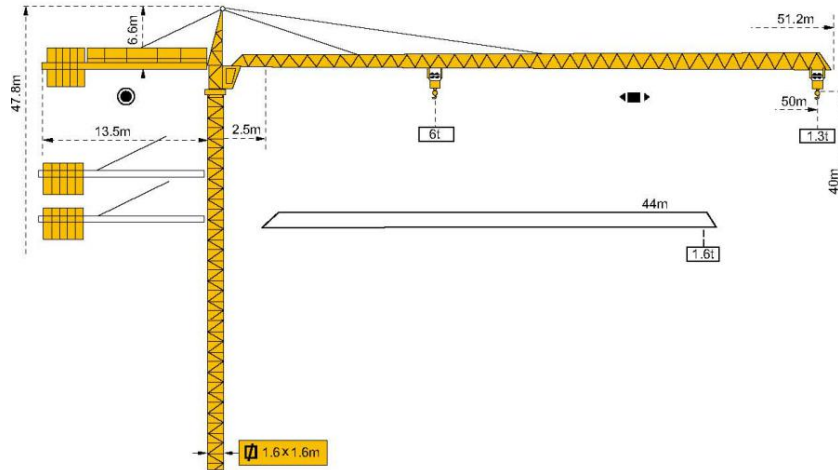


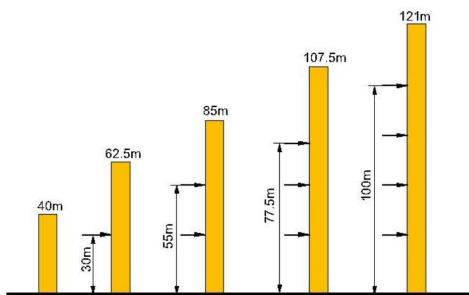
HAMMER HEAD TYPE TOPKIT TOWER CRANE TC5013



外形尺寸 Dimensions

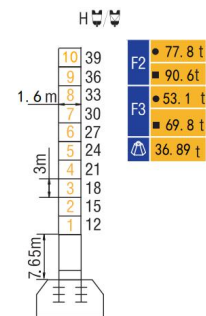


附着 Anchorages



Note: For the height more than 121m after anchoring, please consult us!

技术状态 Status



● 工作状态 In service ■ 非工作状态 Out of service
 ⚠ 不含平衡重最大臂长最大工作高度时的自重
 Without load and ballast with longest jib and maximum height

起重特性 Load Diagrams

起重臂 (m) jib	R _{min}	R (C _{max})	C _{max}	幅度 (m) Range										
				5	10	15	20	25	30	35	40	44	50	
50m		2.3m	25.09m	3000	3000					2320	2050	1620	1380	1300
		2.3m	13.24m	6000	6000	5243	3816	2930	2380	1940	1530	1290	1200	
44m		2.3m	27.85m	3000	3000					2756	2310	1960	1600	
		2.3m	14.7m	6000	6000	5872	4200	3300	2666	2200	1866	1530		

传动机构 Mechanisms

机构 Mechanisms	图例 Example	机构代号 Model	速度 (m/min) Speed	起重量 (t) Hoist Weight	容绳量 (m) Rope Capacity	功率 (kW) Power	
起升 Hoisting		22QP15		0-38	3	400 m >400m*	22
				0-56	2		
				0-80	1.25		
				0-19	6		
				0-28	4		
				0-40	2.5		
变幅 Trolleying		33BDZ60	50/25m/min			3.3/2.2	
回转 Slewing		55HR120	0~0.6 r/min			5.5	
行走 Travelling		RT433	12.5/25m/min			4×1.7/3.4	
电源 Main supply				~380V (±10%) 50Hz			
总功率 (不含顶升和行走) Gross power (excluding top-lifting and travelling)				30.8 kW			

*如需其它传动机构, 请咨询我们! For more mechanisms optional, consult us!

配重配置 Ballast

Counter-jib ballast		2000(kg) / 1500(kg)				
			(kg)	N/A	PZ2000	PZ1500
50m	13.5m	11000	0	4	2	
44m	13.5m	9500	0	4	1	