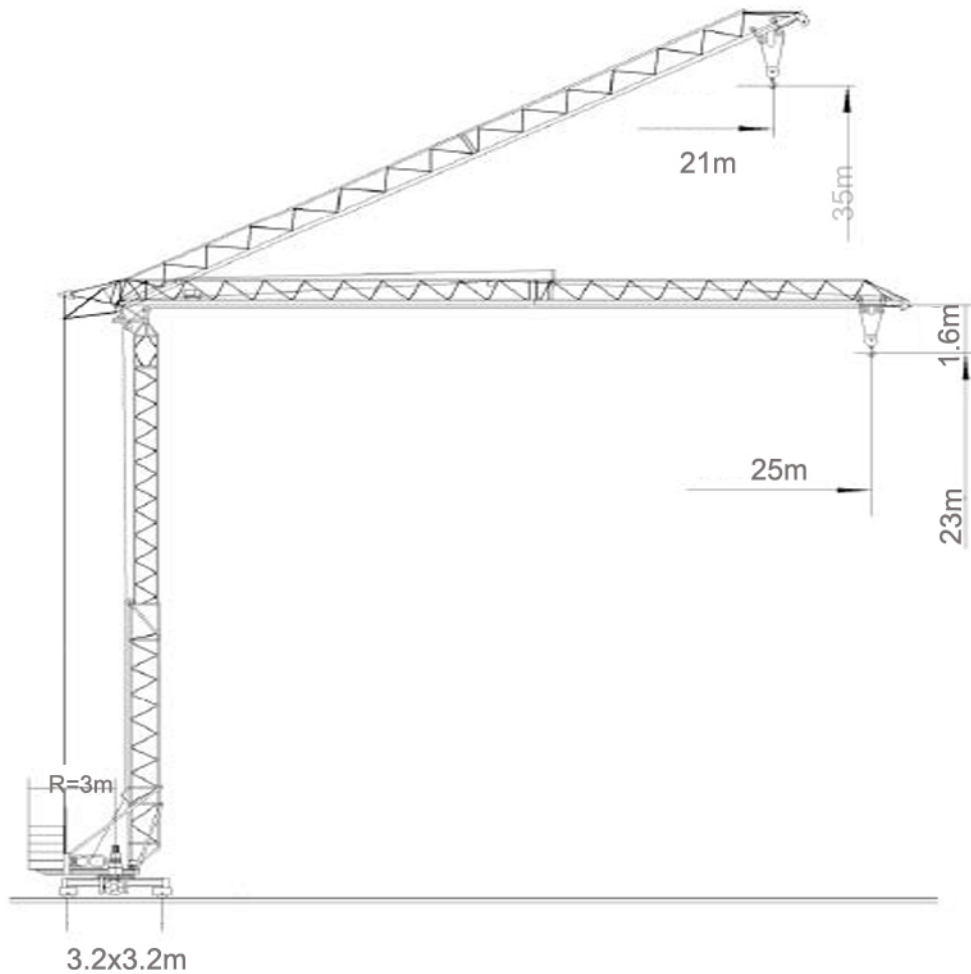


Self-erecting crane QTK25	
Tower crane type	Self-erecting type
Maximum load cap.	3 tons
Work range	3~25 (21)meters
Tip load	1 ton
Free standing height	23 meters
Foundation type	ballast chassis
Power rate:	30 KVA
Self-weight	10.5 tons
Ballast weight	14.4 tons
Color	As per client's request.
Maximum height	125m

QTK25 - 3t max load capacity



LOAD DIAGRAM

Two rates

R(m)	3~17.85	18	19	20	21	22	23	24	25
Q(Kg)	1500	1488	1395	1311	1237	1169	1107	1051	1000
Lift height (m)	23								

Four rates

R(m)	3~9.97	10	12	14	16	18	20	22	24	25
Q(Kg)	3000	2990	2407	2005	1712	1488	1311	1169	1051	1000
Lift height (m)	23									

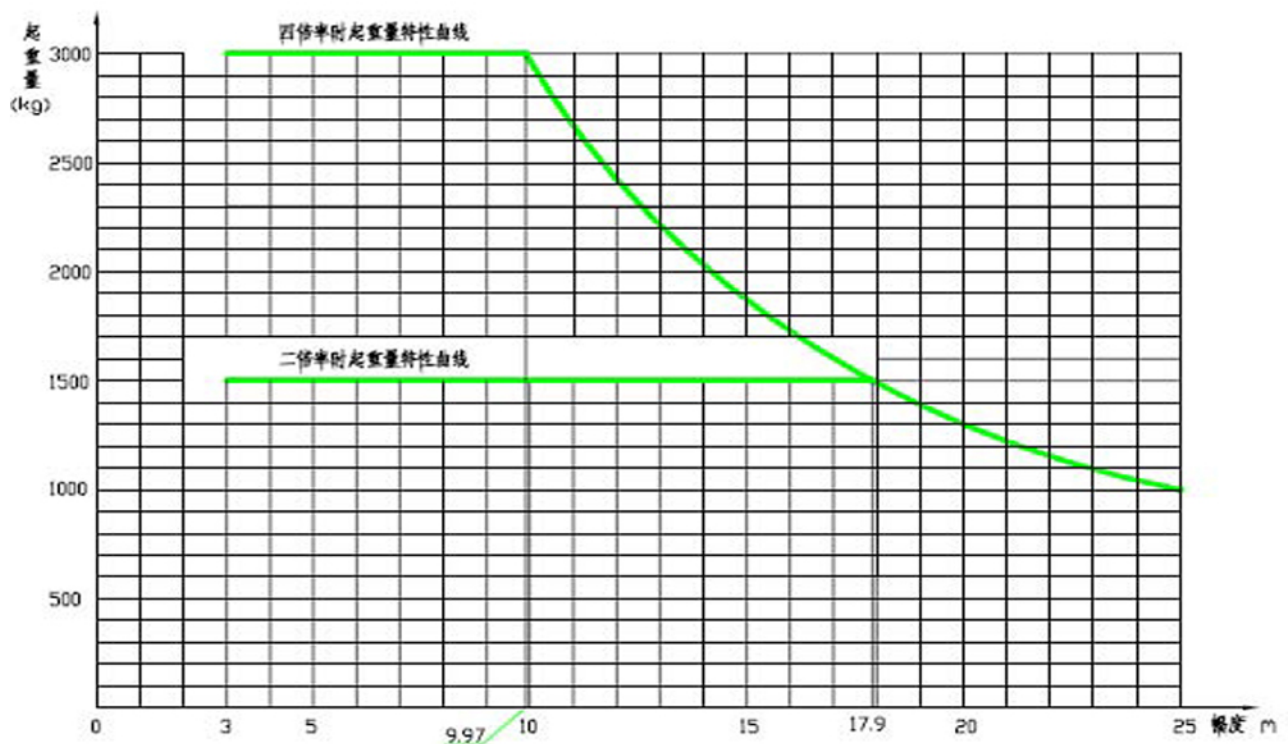
Beam structure 30 ° angle of altitude property list

R(m)	Q(Kg)	Lift height (m)
21	1000	35000

MECHANISM PERFORMANCE DATA

Mechanism name	Unit	Work speed		Power (KW)
		Tow rate	Four rate	
Lifting mechanism	(m/min)	0~32/ 0~32/	0~16	15
Jib lugging mechanism	(m/min)	0~25		3
Crane traveling mechanism	(m/min)	0~20		2×2.2
swing mechanism	(r/min)	0.2/0.4/0.6		2.2

LIFT WEIGHT CHARACTERISTIC CURVE



For more information, please consult us.