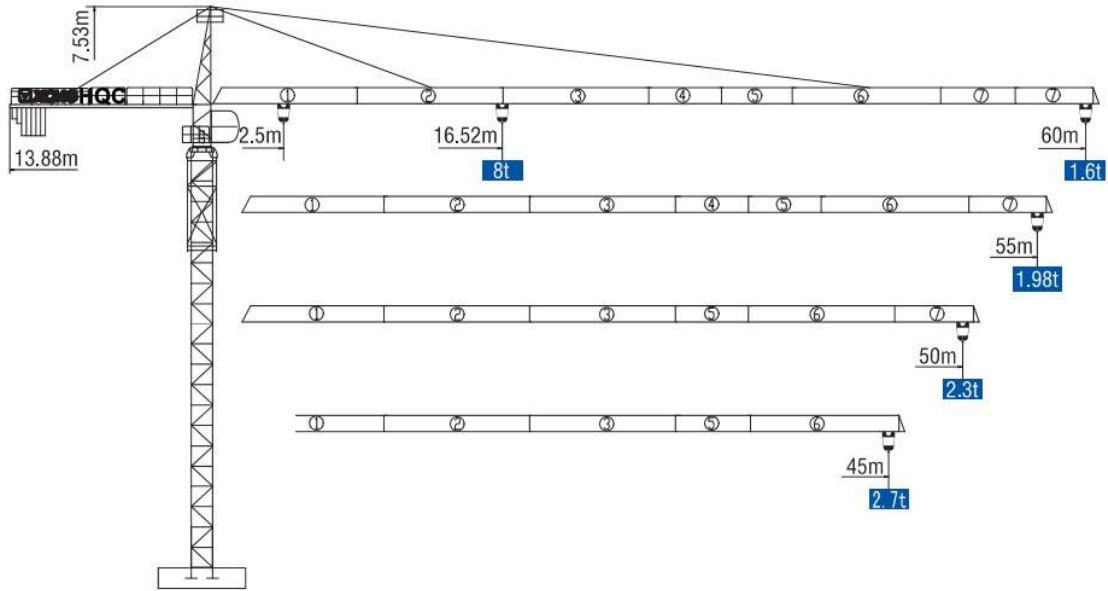


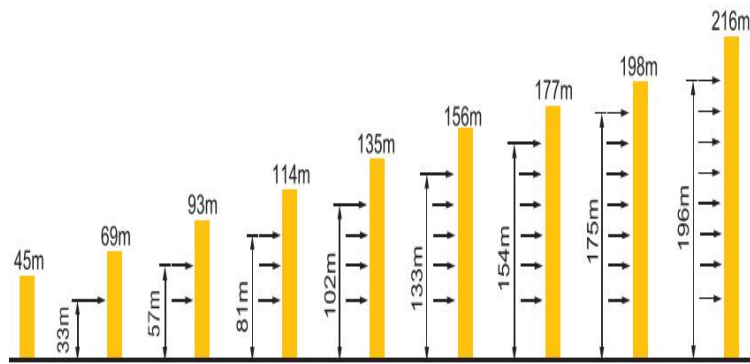
# HAMMER HEAD TYPE TOPKIT TOWER CRANE TC6016



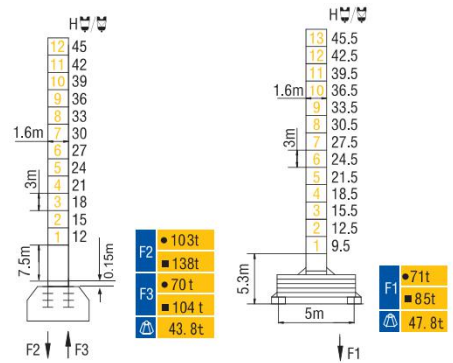
## 外形尺寸 Dimensions



## 附着 Anchorages



## 技术状态 Status



## 起重特性 Load Diagrams

起重臂 (m) jib	R <sub>min</sub>	R (C <sub>max</sub> )	C <sub>max</sub>	幅度 (m) Range								
				20	25	30	35	40	45	50	55	60
60m	2.5	30.06	4t		4000		3315	2797	2397	2077	1817	1600
	2.5	16.52	8t	6403	4912	3930	3235	2717	2317	1997	1737	1520
55m	2.5	31.93	4t		4000		3574	3023	2597	2257	1980	
	2.5	17.52	8t	6864	5277	4233	3494	2943	2517	2177	1900	
50m	2.5	32.37	4t		4000		3636	3077	2645	2300		
	2.5	17.76	8t	6973	5364	4305	3556	2997	2565	2220		
45m	2.5	32.89	4t		4000		3707	3139	2700			
	2.5	18.04	8t	7101	5465	4389	3627	3509	2620			

## 传动机构 Mechanisms

机构 Mechanisms	图例 Example	机构代号 Model	速度 (m/min) Speed		起重量 (t) Hoist Weight	容绳量 (m) Rope Capacity	功率 Power
起升 Hoisting		30LVF20A		40	4	450 >450*	30kW
				80	2		
				20	8		
				40	4		
变幅 Trolleying		50BT65	50/27/9m/min			5/3.7/1.1kW	
		4DVF	0~50m/min			4.5kW	
回转 Slewing		37HR100	0~0.65r/min			2×3.7kW	
		8RVF				2×4kW	
行走 Travelling		RT443	12.5/25m/min			4×1.7/3.4kW	
电源 Main supply					~380V (±10%) 50Hz		
总功率 (不含顶升和行走) Gross power (excluding top-lifting and travelling)						43kW	

## 配重配置 Ballast

Counter-jib ballast		2700(kg) / 2000(kg) / 1600(kg) / 1200(kg)				
		(kg)	PZ2700	PZ2000	PZ1600	PZ1200
60m	13.88m	18300	5	1	1	1
55m	13.88m	16700	5	1	0	1
50m	13.88m	15500	5	1	0	0
45m	13.88m	14000	4	1	0	1