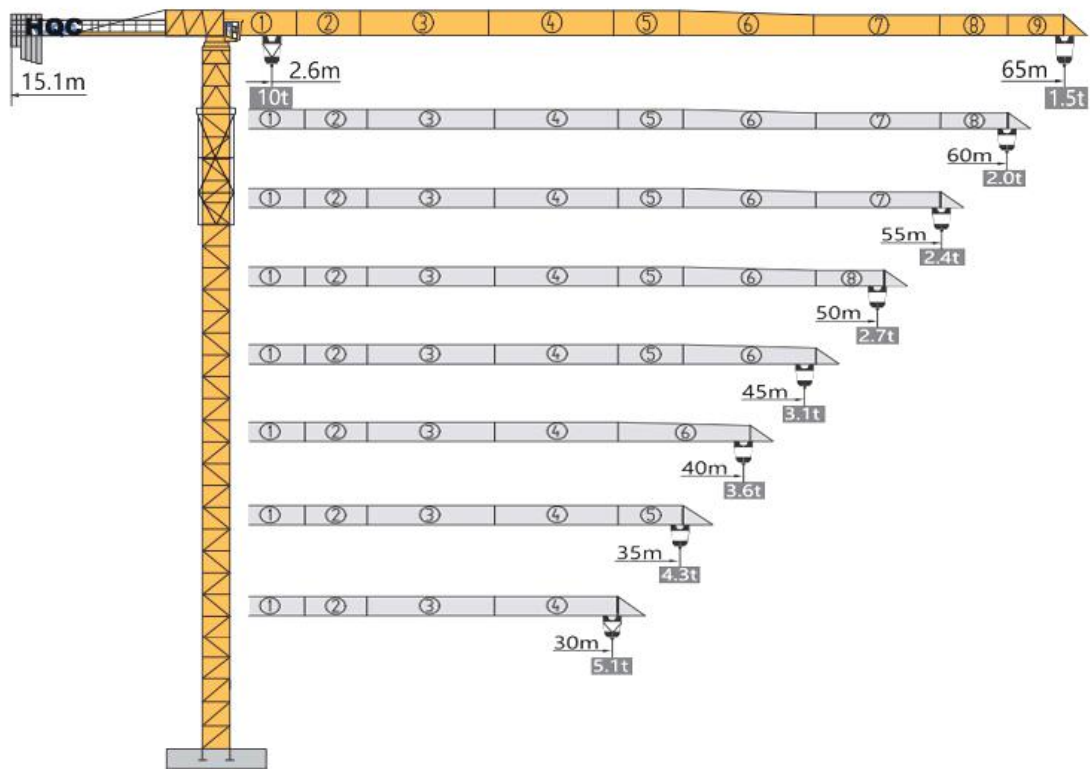


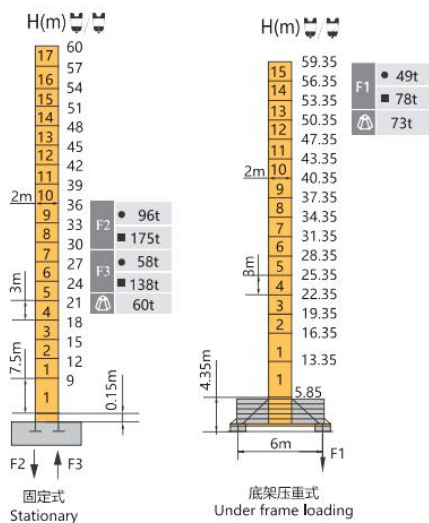
HAMMER HEAD TYPE TOPLESS TOWER CRANE XGT6515-10S



外形尺寸 Dimensions



技术状态 Status

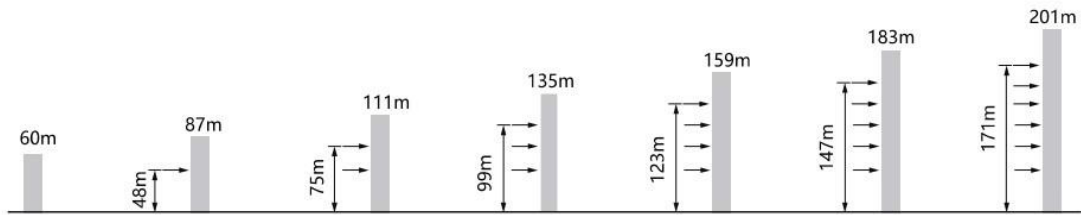


H(m) 吊钩高度 Height of the hook ● 工作状态反力 Reactions in service
 ■ 非工作状态反力 Reactions out of service
 ① 独立高度最大臂长的自重 (不含平衡重, 不含压重)
 Weight with max free standing, max jib (without counter-jib ballast and load)

起重特性 Load Diagrams

起重臂 Jib R(m)	α	R _{min}	R(C _{max})	C _{max}	幅度 (m) / 起重重量 (kg)								Range(m) / Loading (kg)			
		m	m	kg	10	15	20	25	30	35	40	45	50	55	60	65
65		2.6	26.8	5000	5000				4371	3603	3030	2586	2231	1943	1702	1500
		2.6	14.8	10000	10000	9909	7086	5422	4325	3547	2978	2528	2168	1873	1628	1420
60		2.6	29.8	5000	5000				4972	4116	3478	2983	2589	2267	2000	
		2.6	16.4	10000	10000		7990	6140	4921	4057	3412	2913	2515	2190	1920	
55		2.6	31.0	5000	5000					4326	3661	3145	2735	2400		
		2.6	17.1	10000	10000		8354	6430	5161	4262	3591	3072	2658	2320		
50		2.6	30.8	5000	5000					4275	3616	3106	2700			
		2.6	16.9	10000	10000		8257	6353	5098	4207	3544	3030	2620			
45		2.6	30.7	5000	5000					4266	3610	3100				
		2.6	16.9	10000	10000		8235	6335	5082	4195	3532	3020				
40		2.6	31.0	5000	5000					4324	3660					
		2.6	17.1	10000	10000		8330	6411	5146	4249	3580					
35		2.6	31.2	5000	5000					4360						
		2.6	17.1	10000	10000		8385	6455	5182	4280						
30		2.6	30.0	5000	5000											
		2.6	17.2	10000	10000		8405	6470	5195							

附着 Anchorages



传动机构 Mechanisms

传动机构 Mechanisms	图例 Legend	型号 Model	速度 (m/min) Speed	起重重量 (t) Hoist Weight	容绳量 (m) Rope Capacity	功率 (kW) Power
起升 Hoisting		37JLF25A	0-90	1.3	615 >615 *	37
			0-60	2.5		
变幅 Trolleying		4JXF4	0-40	5		
			0-45	2.5		
回转 Slewing		JH08T6	0-30	5		
			0-20	10		
行走 Travelling		RT	0-25m/min			4×4
电源 Main Supply					~ 380V(±10%) 50Hz	
总功率 (不含顶升和行走) Gross Power (Excluding climbing and travelling)					52kW	

配重配置 Ballast

配重配置 Counter-jib Ballast		3200-2450-1000			
(m)	(m)	(kg)	PZ3200	PZ2450	PZ1000
65	15.1	17700	4	2	0
60	15.1	16250	4	1	1
55	15.1	16250	4	1	1
50	15.1	14500	3	2	0
45	15.1	13800	4	0	1
40	15.1	12050	3	1	0
35	15.1	11300	2	2	0
30	15.1	9850	2	1	1