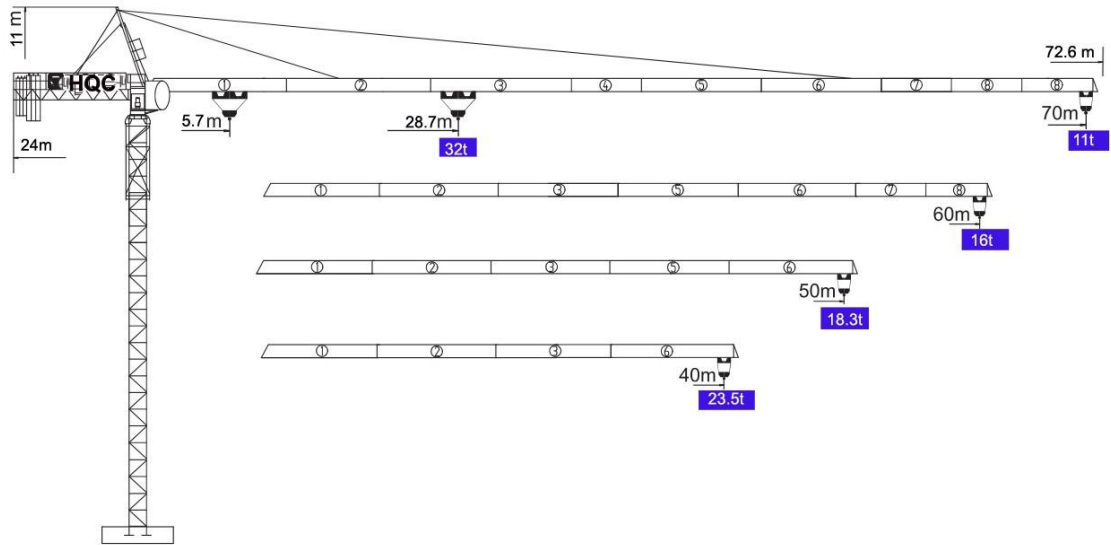
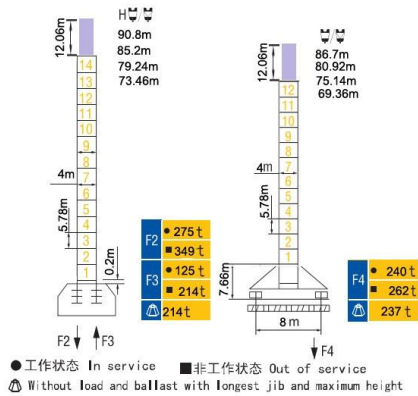


SUPER HEAVY TYPE TOPKIT TOWER CRANE HQ900-32

外形尺寸 Dimensions



技术状态 Status



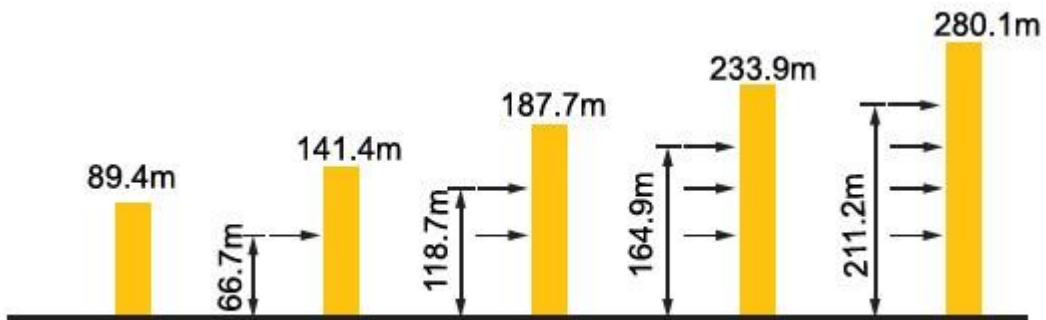
配重配置 Ballast

Counter-jib ballast		11400kg/10500kg/8000kg			
		(kg)	PZ11400	PZ10500	PZ8000
70m	24m	57000	5	0	0
60m	24m	53600	4	0	1
50m	24m	42200	3	0	1
40m	24m	32400	1	2	0

起重特性 Load Diagrams

起重臂 (m) Jib	R _{min}	R (C _{max})	C _{max}	幅度 (m) Range												
				15	20	25	30	35	40	45	50	55	60	65	70	
70m		5.7m	52.5m	16t	16000					16000	16000	16000	15100	13500	12200	11000
		5.7m	28.7m	32t	32000	32000	30500	25500	21700	18800	16500	14500	12900	11600	10400	
60m		5.7m	60m	16t	16000					16000	16000	16000	16000			
		5.7m	31.2m	32t	32000	32000	32000	28000	24000	20800	18300	16200	15000			
50m		5.7m	50m	16t	16000					16000	16000					
		5.7m	31.2m	32t	32000	32000	32000	28000	24000	20800	18300					
40m		5.7m	40m	16t	16000											
		5.7m	31.2m	32t	32000	32000	32000	28000	24000							

附着 Anchorages



★ 如需达到更高的高度，请与我们联系! For greater heights, consult us!

传动机构 Mechanisms

机构 Mechanisms	图例 Example	机构代号 Model	速度(m/min) Speed	起重量(t) Hoist Weight	容绳量(m) Rope Capacity	功率 Power	
起升 Hoisting		180LVF85		0-36	16	700M	132KW
				0-72	8		
				0-18	32	>700*	
				0-36	16		
变幅 Trolleying		33DVF26	0-45-65			24KW	
回转 Slewing		55RVF	0-0.55R/MIN			18.5KW	
		55RVF				18.5KW	
行走 Travelling		56TVF	0-34			8X5.2KW	
电源 Main supply					380V/50HZ; 440V/60HZ		
总功率 (不含顶升和行走) Gross power (excluding top-lifting and travelling)					275KVA		