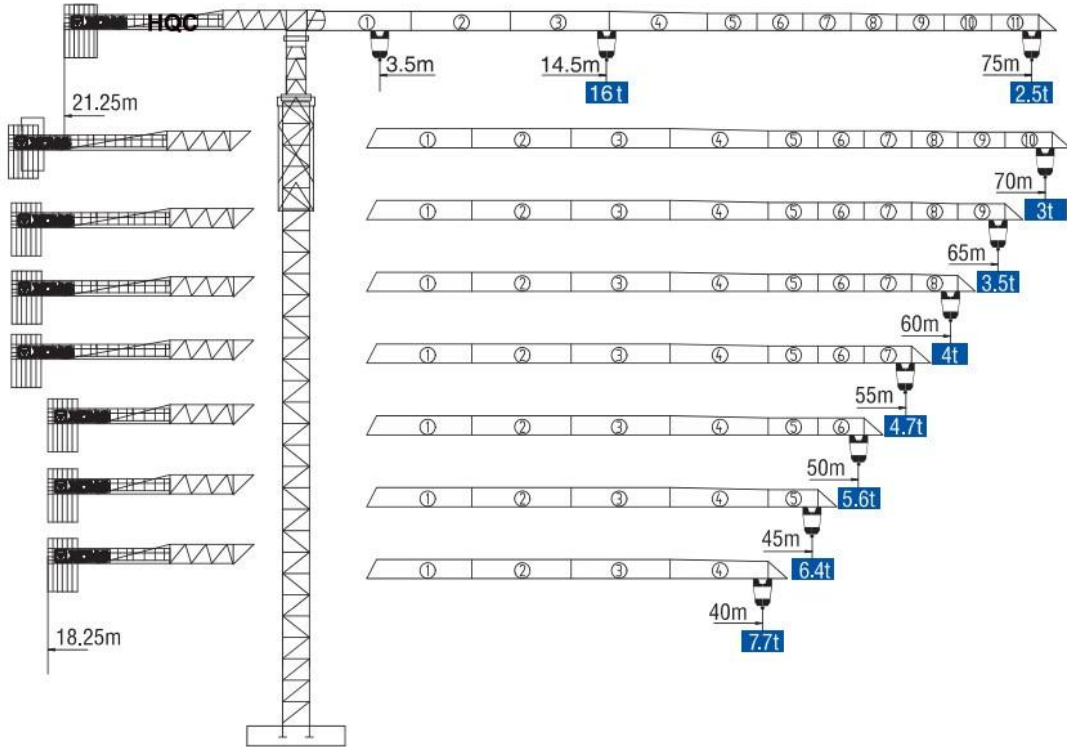


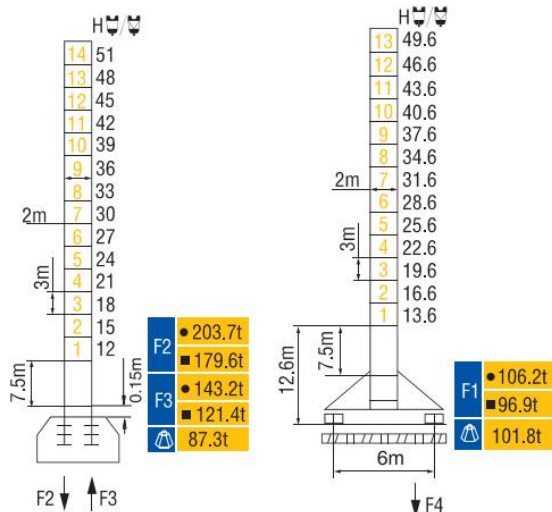
HAMMER HEAD TYPE TOPLESS TOWER CRANE XGT7525



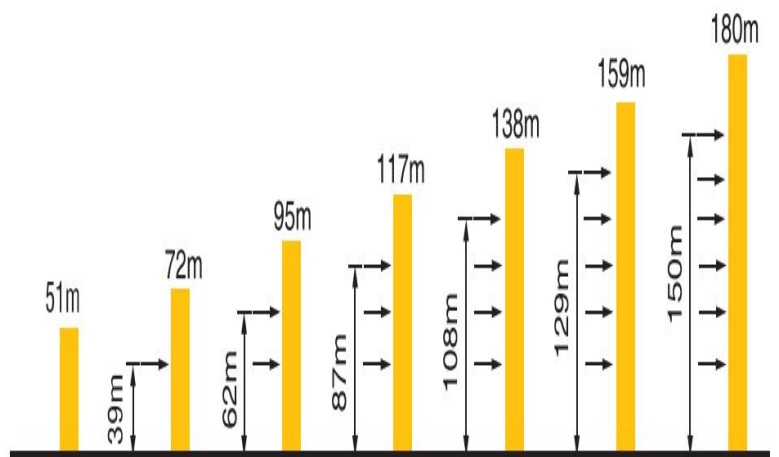
外形尺寸 Dimensions



技术状态 Status



附着 Anchorages



★如需达到更高的高度, 请与我们联系! For greater heights, consult us!

● 工作状态 In service ■ 非工作状态 Out of service
 ▲ 不含平衡重最大臂长最大工作高度时的自重
 Without load and ballast with longest jib and maximum height

起重特性 Load Diagrams

起重臂 (m) jib		R _{min}	R (C _{max})	C _{max}	幅度 (m) Range											
					20	25	30	35	40	45	50	55	60	65	70	75
75m		3.5	25.6	8t	8	8	7.65	6.43	5.44	4.73	4.18	3.72	3.34	3.02	2.74	2.5
		3.5	14.5	16t	11.5	8.93	7.22	5.98	5.07	4.36	3.79	3.32	2.93	2.6	2.31	2.07
70m		3.5	32.5	8t	8	8	8	6.83	5.89	5.14	4.54	4.05	3.64	3.3	3	
		3.5	15.5	16t	12	9.68	7.86	6.5	5.52	4.76	4.15	3.65	3.23	2.87	2.57	
65m		3.5	32.3	8t	8	8	8	7.3	6.27	5.43	4.81	4.29	3.86	3.5		
		3.5	16.6	16t	13.8	10.65	8.32	6.87	5.95	5.04	4.42	3.87	3.44	3.07		
60m		3.5	33.3	8t	8	8	8	7.52	6.46	5.62	4.97	4.44	4			
		3.5	17	16t	13.44	13.44	8.51	7.09	6.04	5.21	4.55	4.02	3.57			
55m		3.5	34.1	8t	8	8	8	7.93	6.82	5.96	5.26	4.7				
		3.5	17.5	16t	15.17	15.17	9.38	7.54	6.43	5.56	4.86	4.3				
50m		3.5	37.2	8t	8	8	8	8	7.23	6.32	5.6					
		3.5	19	16t	12	12	9.57	7.97	6.81	5.89	5.17					
45m		3.5	38.3	8t	8	8	8	8	7.31	6.4						
		3.5	19.1	16t	15.14	15.14	9.64	8.07	6.83	5.97						
40m		3.5	38.6	8t	8	8	8	8	7.7							
		3.5	20.63	16t	16	12.48	10.18	8.53	7.3							

传动机构 Mechanisms

机构 Mechanisms	图例 Example	机构代号 Model	速度 (m/min) Speed	起重量 (t) Hoist Weight	容绳量 (m) Rope Capacity	功率 Power	
起升 Hoisting		75JLF40F		90	2.7	804 >804*	75kW
				60	6		
				45	8		
				45	5.4		
				30	12		
				22	16		
变幅 Trolleying		9JXF8	0-65m/min			9kW	
回转 Slewing		RCV290	0-0.7r/min			2×145N·m	
行走 Travelling		RT443	12.5/25m/min			4×4 kW	
电源 Main supply					380V/50Hz; 440V/60Hz		
总功率 (不含顶升) Gross power (excluding top-lifting)					110 kW		

配重配置 Ballast

Counter-jib ballast		3640 (kg) / 2450 (kg)		
			PZ3640	PZ2450
75m	21.25m	20650	5	1
70m	21.25m	20650	5	1
65m	21.25m	20650	5	1
60m	21.25m	19460	4	2
55m	21.25m	18200	5	0
50m	18.25m	21840	6	0
45m	18.25m	20650	5	1
40m	18.25m	19460	4	2