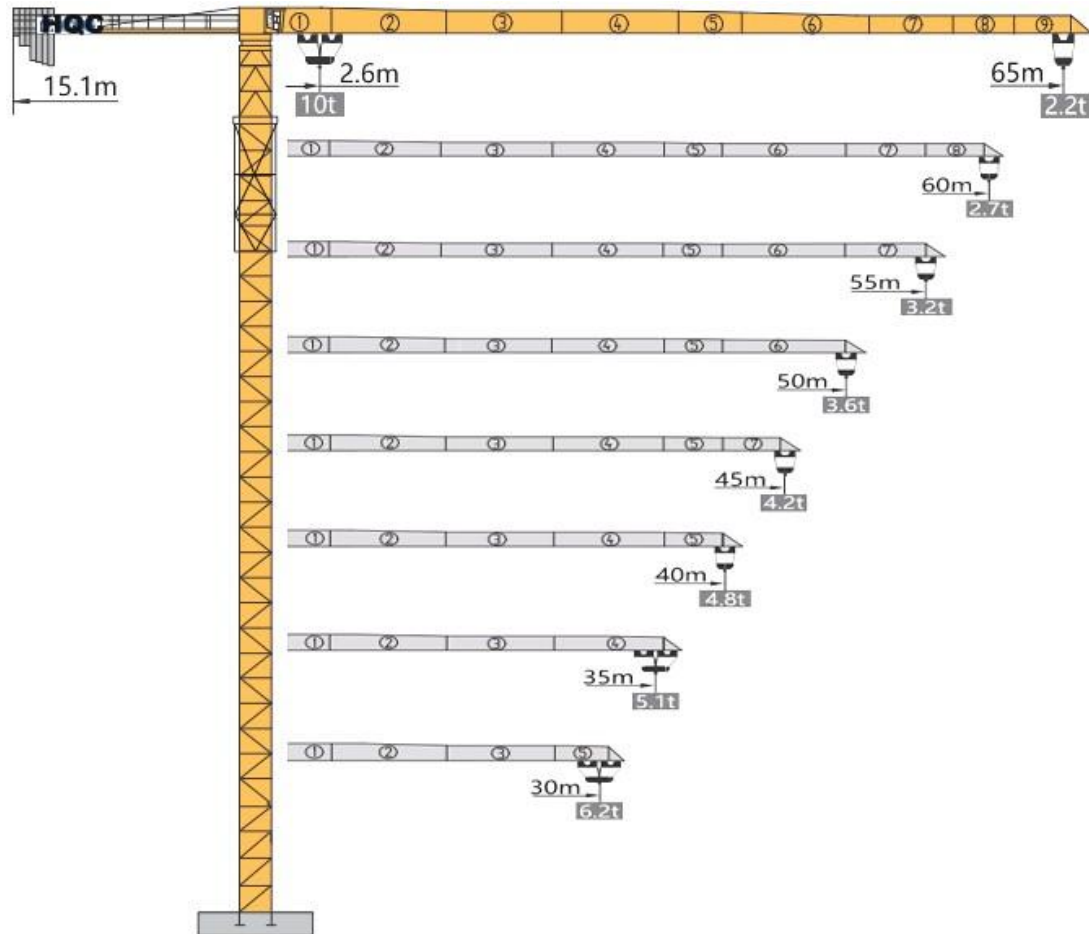


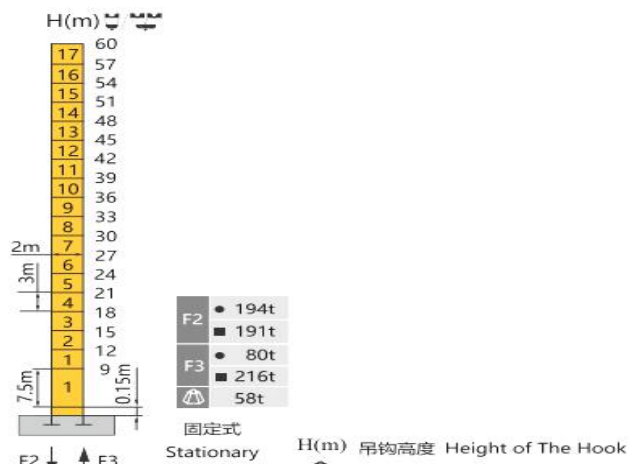
# HAMMER HEAD TYPE TOPLESS TOWER CRANE XGT6522-10S



## 外形尺寸 Dimensions



## 技术状态 Status

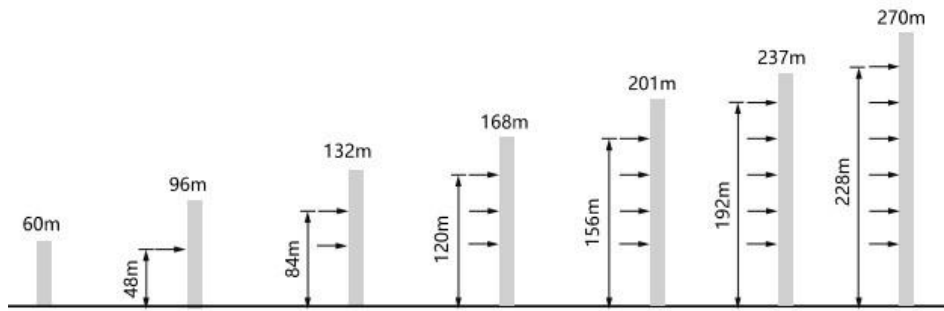


● 工作状态反力 Reactions in service ■ 非工作状态反力 Reactions out of service  
 独立高度最大臂长的自重 (不含平衡重, 压重)  
 Weight with max free standing, max jib (without counter-jib ballast and load)

## 起重特性 Load Diagrams

起重臂 Jib R(m)	α	R/Cmax			幅度 (m)/起重量 (kg) Range (m) /Loading (kg)											
		R <sub>min</sub> m	R(C <sub>max</sub> ) m	C <sub>max</sub> m	10	15	20	25	30	35	40	45	50	55	60	65
65	↙	2.6	32.3	5000	5000											
	↘	2.6	15.9	10000	10000	7772	6023	4856	4023	3398	2912	2523	2204	1939	1715	
60	↙	2.6	35.2	5000	5000											
	↘	2.6	17.4	10000	10000	8599	6684	5407	4495	3811	3279	2853	2505	2215		
55	↙	2.6	37.2	5000	5000											
	↘	2.6	18.4	10000	10000	9176	7146	5792	4825	4100	3535	3084	2715			
50	↙	2.6	37.9	5000	5000											
	↘	2.6	18.8	10000	10000	9378	7307	5926	4940	4201	3625	3165				
45	↙	2.6	38.5	5000	5000											
	↘	2.6	19.4	10000	10000	9580	7469	6061	5056	4302	3715					
40	↙	2.6	38.9	5000	5000											
	↘	2.6	19.4	10000	10000	9707	7570	6146	5128	4365						
35	↙	2.6	35.0	5000	5000											
	↘	2.6	19.5	10000	10000	9772	7622	6189	5165							
30	↙	2.6	30.0	5000	5000											
	↘	2.6	19.7	10000	10000	9841	7677	6235								

## 附着 Anchorages



## 传动机构 Mechanisms

传动机构 Mechanisms	图例 Legend	型号 Model	速度 (m/min) Speed	起重量(t) Hoist Weight	容绳量(m) Rope Capacity	功率(kW) Power
起升 Hoisting	⬆️	37JLF25A	0-90	1.3	615 >615*	37
			0-60	2.5		
			0-40	5		
			0-45	2.5		
			0-30	5		
			0-20	10		
变幅 Trolleying	⬅️➡️	4JXF4	0-58m/min		4	
回转 Slewing	🔄	JH02B	0-0.6r/min		2×7.5	
行走 Travelling	⬅️➡️	RT443	0-25m/min		4×4	
电源 Main Supply				380V/50HZ Or 440V/60HZ 3P		
总功率 (不含顶升和行走) Gross Power (Excuding climbing and travelling)				56kW		

## 配重配置 Ballast

配重配置 Counter-jib ballast			3200-2450-1000		
📐 (m)	🏗️ (m)	🏋️ (kg)	PZ3200	PZ2450	PZ1000
65	15.1	18700	4	2	1
60	15.1	17700	4	2	0
55	15.1	17700	4	2	0
50	15.1	16250	4	1	1
45	15.1	14500	3	2	0
40	15.1	13800	4	0	1
35	15.1	11300	2	2	0
30	15.1	8850	2	1	0