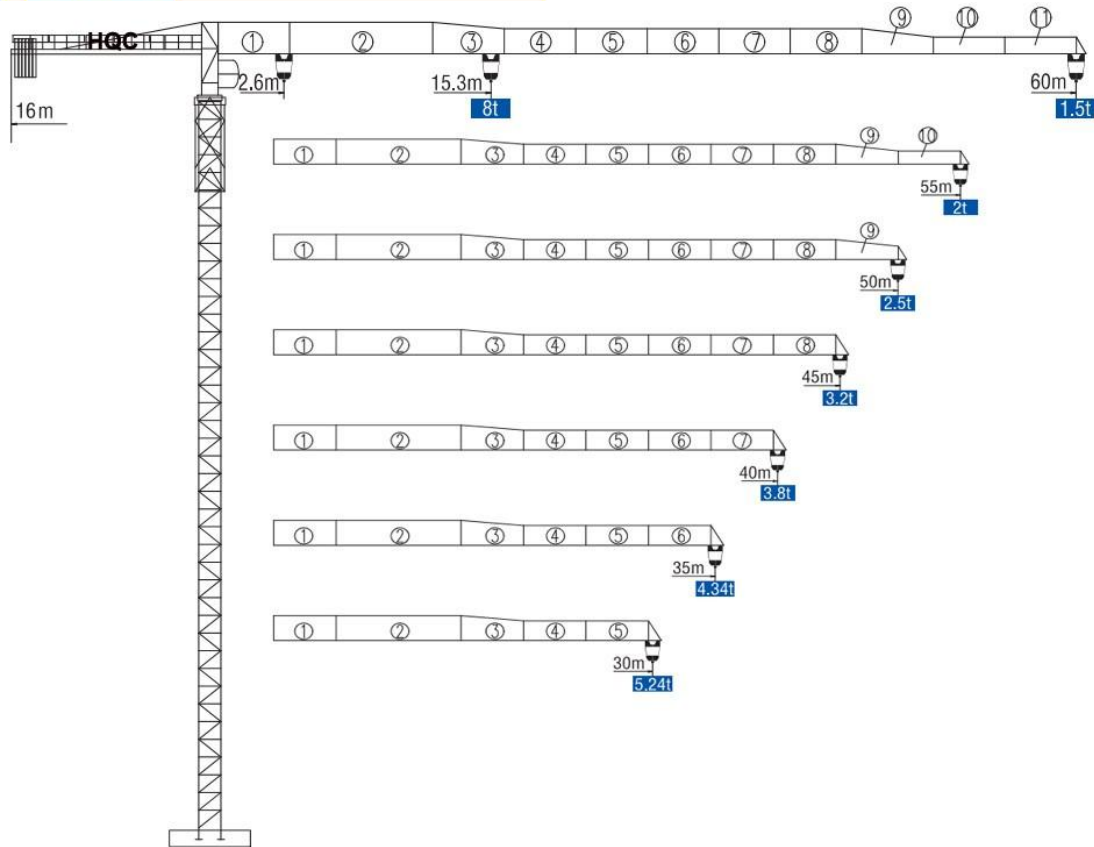


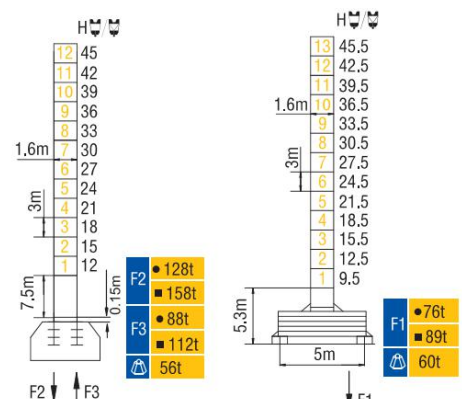
HAMMER HEAD TYPE TOPLESS TOWER CRANE XT6015-8



外形尺寸 Dimensions

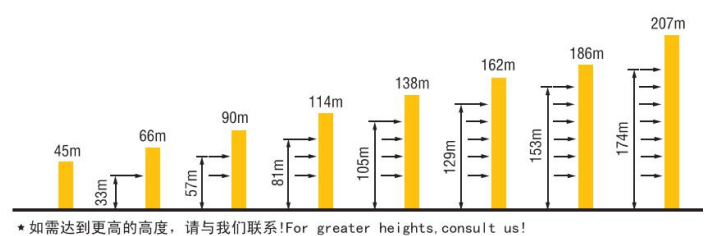


技术状态 Status



● 工作状态 In service ■ 非工作状态 Out of service
 ⚠ 不含平衡重最大臂长最大工作高度时的自重
 Without load and ballast with longest jib and maximum height

附着 Anchorages



* 如需达到更高的高度，请与我们联系！For greater heights, consult us!

起重特性 Load Diagrams

起重臂 (m) jib	R _{min}	R (C _{max})	C _{max}	幅度 (m) Range										
				15	20	25	30	35	40	45	50	55	60	
60m		2.6	28.1	4t	4000			3726	3085	2607	2236	1941	1700	1500
		2.6	15.3	8t	8000	5824	4486	3608	2984	2158	2157	1870	1635	1440
55m		2.6	31.8	4t	4000			3523	2997	2590	2265	2000		
		2.6	17.2	8t	8000	6676	5168	4173	3469	2943	2536	2106	1940	
50m		2.6	34.3	4t	4000			3860	3292	2851	2500			
		2.6	18.6	8t	8000	7275	5644	4569	3806	3238	2797	2440		
45m		2.6	37.7	4t	4000			3685	3200					
		2.6	20.4	8t	8000	6279	5096	4257	3631	3140				
40m		2.6	38.1	4t	4000			3800						
		2.6	20.6	8t	8000	6466	5250	4389	3740					
35m		2.6	35	4t	4000									
		2.6	20.8	8t	8000	6402	5195	4340						
30m		2.6	30	4t	5000									
		2.6	20.95	8t	8000	6456	5240							

传动机构 Mechanisms

机构 Mechanisms	图例 Example	机构代号 Model	速度 (m/min) Speed	起重量 (t) Hoist Weight	容绳量 (m) Rope Capacity	功率 Power	
起升 Hoisting		30LVF20P		40	4	435 >435*	30kW
				80	2		
				20	8		
				40	4		
		30GR20P		40	4	450 >450*	30/30kW
				80	2		
20	8						
变幅 Trolleying		40VF	0~58m/min			4kW	
		50BT65	50/27/9m/min			5/3, 7/1, 1kW	
回转 Slewing		RCV190	0~0.6r/min			2×95N.m	
行走 Travelling		RT443	12.5/25m/min			4×1, 7/3, 4kW	
电源 Main supply				380V/50Hz; 440V/60Hz			
总功率 (不含顶升和行走) Gross power (excluding top-lifting and travelling)					59.5kW		

配重配置 Ballast

Counter-jib ballast			3200 (kg) / 1600 (kg) / 1000 (kg)		
			PZ3200	PZ1600	PZ1000
60m	16 m	15400	4	1	1
55m	16 m	14400	4	1	0
50m	16 m	13800	4	0	1
45m	16 m	12800	4	0	0
40m	16 m	11200	3	1	0
35m	16 m	9600	2	1	1
30m	16 m	8000	2	1	0